



Mission



Driven

Point A. to Point B.



# Mission Driven

## Point A. to Point B.

We are driven by the mission instilled in us by our founders, Joyce and Elizabeth Ann Hall. As we travel forward into 2016, we pause to look back on our 2015 journey. With mission-driven nonprofit agencies serving the Kansas City region as our copilots, we will continue the journey to advance quality programs and strategies ... traveling together from Point A. to Point B.

**M.**

**04.**  
OUR MISSION

**F.**

**05.**  
THE FOUNDERS

**P.**

**06.**  
PRESIDENT'S  
LETTER

**C.**

**08.**  
CHILDREN, YOUTH  
& FAMILIES

**E.**

**16.**  
EDUCATION

**H.**

**20.**  
HIGHER  
EDUCATION

**A.**

**26.**  
THE ARTS

**N.**

**32.**  
NEIGHBORHOOD  
REVITALIZATION

**I.**

**36.**  
ADDITIONAL  
INTERESTS

**G.**

**42.**  
2015 GRANT  
RECIPIENTS MAP

**F.**

**44.**  
2015 FINANCIAL  
HIGHLIGHTS

**S.**

**46.**  
DIRECTORS  
& STAFF

**The Hall Family Foundation is a private philanthropic organization dedicated to enhancing the quality of human life. Programs that enrich the community, help people and promote excellence are considered to be of prime importance. The Foundation views its primary function as that of a catalyst. It seeks to be responsive to programs that are innovative, yet strive to create permanent solutions to community needs in the Greater Kansas City area.**



## **Joyce C. Hall & Elizabeth Ann Hall**

The mission of the Hall Family Foundation, established in 1943, stems from the original purposes of its founders: Joyce C. Hall; his wife, Elizabeth Ann Hall; and his brother, Rollie B. Hall. As outlined in the original bylaws, they intended that the Foundation should promote ... the health, welfare and happiness of school-age children ... the advancement and diffusion of knowledge ... activities for the improvement of public health ... and advancement of social welfare. These purposes were based on a family resolve to help people and enhance the quality of life. Over 70 years later, their legacy lives on.

Joyce C. Hall was born on August 29, 1891, in David City, Nebraska. He was a plain-spoken individual with a respect for hard work and an unwavering commitment to quality. Mr. Hall came to Kansas City in 1910, and, starting with a shoebox full of cards and a rented YMCA room, began the business that was to become Hallmark Cards, Inc. In 1921, Joyce Hall married Elizabeth Ann Dilday. Together they built a life dedicated to family and community. Together they created the Foundation that nurtures and strengthens the city they loved.

**"We appreciate your interest in writing us about your organization and its programs. We regret, however, that we are unable to offer the support you seek. As you might expect, the Foundation receives many requests for support, and unfortunately cannot respond positively to all. In an effort to make the greatest impact with limited resources, we find we must restrict the activities in which we become involved."**

For those of us who work in the Hall Family Foundation we write this, or a similar paragraph, more often than we would like. Saying 'no' is difficult! There are many good ideas that we would like to support. There are many committed people who foster those good ideas. We know the effort that is required to bring a project forward and we know that securing money for a project requires a commitment of time and often personal resources. And yet too often we must say 'no' ... there are more good ideas than resources. Thus we must decide to whom we give and how much.

It would be wrong to believe grantmaking is a science ... it is not. As we engage in grantmaking there are a number of factors we consider.

First, and always foremost, is donor intent. We are stewards of the philanthropic legacy of Joyce and Elizabeth Hall. Their values and interests are reflected in our mission statement (page 04). The Foundation's mission statement will endure in this or a similar form because it is a reflection of how they wanted to give back to this community ... a community they admired for its "Kansas City spirit."

Guided by this mission statement we have five areas of focus: Children, Youth and Families; Neighborhood Revitalization; Education (including pre-K, K-12 and higher education); the Arts; and Additional Interests. With outside expert input and board guidance we develop strategies for each of these program areas and then seek out and support projects that advance these strategies. More information on these strategies can be found on the Hall Family Foundation website: [hallfamilyfoundation.org](http://hallfamilyfoundation.org).

As we consider requests, our experience with the organizations and the people responsible for executing the programs is important. We want to support good ideas with committed and effective people. Our board and staff are deeply engaged in the charitable life of Kansas City and bring substantial insights to our grantmaking. Their knowledge of projects and people is invaluable in our decision making.

As we try to determine our grantmaking relying on donor intent, program strategies and community knowledge, we know there are many worthwhile projects we would like to support, but we have limited resources. Further, we know there are projects we have not supported that have proven to be successful. Our pledge is to try to be the best stewards that Joyce and Elizabeth Hall hoped we would be with their philanthropic legacy.

This year's grants were the second highest in foundation history at nearly \$42 million. Assets declined due to weak equity markets and the high level of grants. Our grantmaking relies on a percentage of our assets so grants will likely be less in the next year.

Each year I express our gratitude to the many talented partners in the not-for-profit community. They are the ones who turn our investments into actions and results. We have great respect and admiration for what they do and could not achieve our goals without their outstanding efforts. Further, our small staff continues to be accessible, knowledgeable and engaged. Thank you to them for their commitment.

The Foundation remains dedicated to the principles of Joyce and Elizabeth Hall and, with the continued leadership of the Hall family, involvement of an active board and the conscientious work of our professional staff, we look forward to working with the community for years to come.



**WILLIAM A. HALL**  
PRESIDENT, HALL FAMILY FOUNDATION



# Point C. Children, Youth & Families

The Hall Family Foundation worked with nearly 70 nonprofit agencies in the Children, Youth & Families category in 2015, all of which are mission-driven to meet a variety of community needs in the greater Kansas City area. It is our largest category in terms of number of grants made each year.

Grants in the Children, Youth & Families category intend to improve well-being and respond to families' physical and emotional needs. The Foundation emphasizes services to people most at risk due to poverty, limited access to resources, health issues and exposure to violence. Our preference is assistance to children and youth and to those living in the urban cores of Kansas City, Missouri and Kansas City, Kansas.

Special Focus	Priority Areas	Supplemental Interests	2015
<p>The Foundation takes a special interest in Children's Mercy Hospital, the region's foremost pediatric hospital. It has been nationally recognized for its excellent care and research, providing a compassionate and family-centered environment to all patients, regardless of ability to pay.</p>	<p>Keystone agencies serve a large portion of the community's most vulnerable populations, assisting people most at risk due to poverty, health issues, limited resources and exposure to violence. Foundation support for well-established, large agencies ensures sustainability of vital services.</p>	<p>In this diverse category, the Foundation supports a broad range of agencies meeting specialized needs. They can be characterized as completing the spectrum of services in our community with experts filling niches, often with dedicated, passionate leadership and loyal followings.</p>	<p><b>Smallest Grant</b> <b>\$10K</b> Alphapointe</p>
<p><b>2015 Category Highlights</b></p>			<p><b>Largest Grant</b> <b>\$2.4M</b> Harvesters</p>
<p><b>SAFEHOME</b> is one of six area domestic violence agencies. It recently increased capacity with more shelter beds and expanded counseling and children's services through moving education and administrative functions to a separate building. SAFEHOME's expansion was necessary because of improved methods of identifying and helping those at high risk for life-threatening violence.</p> <p><b>Miles of Smiles</b> gives free dental care to school-age children in the Northland through traveling teams who go to the children, setting up in a school or nonprofit agency for several weeks to provide basic services. Follow-up appointments and more complex procedures take place in two permanent locations.</p> <p><b>Community LINC</b> ends homelessness and transforms lives. It works with homeless families to get them quickly into housing and engaged in supportive services and community agency programs. With continuing case management, over 90% of the families that moved to permanent housing have remained housed.</p> <p><b>The Truman Medical Center Charitable Foundation (TMCCF)</b> supports the work and mission of Truman Medical Centers (TMC), Missouri's largest safety-net hospital system. TMCCF raises funds to help TMC provide excellent, high quality healthcare with special emphasis on low-income, high risk individuals. As the primary community teaching hospital for the UMKC Medical School, TMC delivers compassionate care in welcoming facilities with the most advanced medical technology available.</p>			<p><b>Percentage of Total Grants Paid</b> <b>19%</b></p>
			<p><b>Grants Paid in Category</b> <b>\$8,071,696</b></p>

## Children, Youth & Families

Organization   Project Title	Grant Amount	Paid Amount
<b>After the Harvest</b> Furnish and Equip New Office	\$100,000	\$100,000
<b>Alphapointe</b> Youth Services Program	\$10,000	\$10,000
<b>Amethyst Place</b> 2015-2017 Campaign for Increased Program Space	\$150,000	\$75,000
<b>Avenue of Life, Inc.</b> Transitional Internship Program	\$49,500	\$49,500
<b>Bethel Neighborhood Center</b> Capital Campaign	\$250,000	\$0
<b>Big Brothers Big Sisters of Greater KC</b> "Four Pillars of Hope" Campaign	\$300,000	\$100,000
<b>Boys &amp; Girls Clubs of Greater Kansas City</b> Youth Development Program Support -2015	\$725,000	\$225,000
2016 Program Support & "Great Futures" Campaign Pledge	\$1,419,000	\$500,000
<b>Black Community Fund</b> Individual Giving Project	\$15,000	\$15,000
<b>Camp Fire</b> Out-of-School Time Program Support	\$20,000	\$20,000
<b>Camps for Kids</b> 2015 Summer Camp Program	\$40,000	\$40,000
<b>Catholic Charities of Kansas City–St. Joseph</b> "Anti-Poverty Initiative" Support	\$500,000	\$250,000
<b>Catholic Charities of Northeast Kansas</b> Emergency Assistance and Planning Grant	\$150,000	\$150,000
<b>Center for Practical Bioethics</b> Program Support	\$50,000	\$50,000
<b>Child Abuse Prevention Association</b> Program Support	\$30,000	\$30,000
<b>Child Protection Center, Inc.</b> Renovation for Program Expansion	\$23,225	\$23,225
<b>Children's Place</b> Agency Transportation Program	\$39,000	\$39,000
<b>Community LINC</b> Housing Program Support (2015-17)	\$325,000	\$150,000
<b>Community Services League</b> Work Express Program Expansion (2013-15)	\$200,000	\$50,000

## Children, Youth & Families

Organization   Project Title	Grant Amount	Paid Amount
<b>Cornerstones of Care</b> Healthy Kids Initiative	\$65,000	\$65,000
<b>Cross-Lines Community Outreach</b> "Hope for a Better Tomorrow" Campaign	\$250,000	\$250,000
<b>Developing Potential, Inc.</b> Telecommunications System Improvements	\$10,066	\$10,066
<b>Don Bosco Centers</b> Sustain ESL Program Expansion	\$40,000	\$20,000
<b>First Call</b> "Families First" Campaign	\$200,000	\$200,000
<b>Full Employment Council, Inc.</b> Continuing Support of "Project Rise"	\$100,000	\$100,000
<b>Gillis Center, Inc.</b> Healing Habitats Project	\$70,000	\$70,000
<b>Girl Scouts of NE Kansas &amp; NW Missouri</b> Outreach Program - New Strategic Plan	\$225,000	\$75,000
<b>Happy Bottoms</b> Quality Control Pilot Program	\$24,000	\$24,000
<b>Harvesters</b> Capital & Program Support for Strategic Plan Initiatives	\$2,400,000	\$300,000
<b>Hope Faith Ministries</b> Transitional Internship Program Support	\$50,000	\$15,000
<b>Jackson County CASA</b> Transition Program for Older Foster Youth	\$183,000	\$61,000
<b>Johnson Co. Interfaith Hospitality Network, Inc.</b> Program Expansion Serving Women in Johnson County	\$50,000	\$35,000
<b>Kids TLC</b> Capital Improvements Project	\$165,000	\$165,000
<b>LaunchCode</b> Jobs Program Launch in Kansas City	\$50,000	\$50,000
<b>Literacy Kansas City</b> Program Support	\$20,000	\$20,000
<b>Mattie Rhodes Counseling &amp; Art Center</b> Program Support - Mental Health Services	\$90,000	\$25,000
<b>Medical Society of Johnson &amp; Wyandotte Co.</b> Strategic Planning	\$27,000	\$0
<b>Mental Health America of the Heartland</b> Strategic Fund Development Training Youth	\$22,475	\$22,475



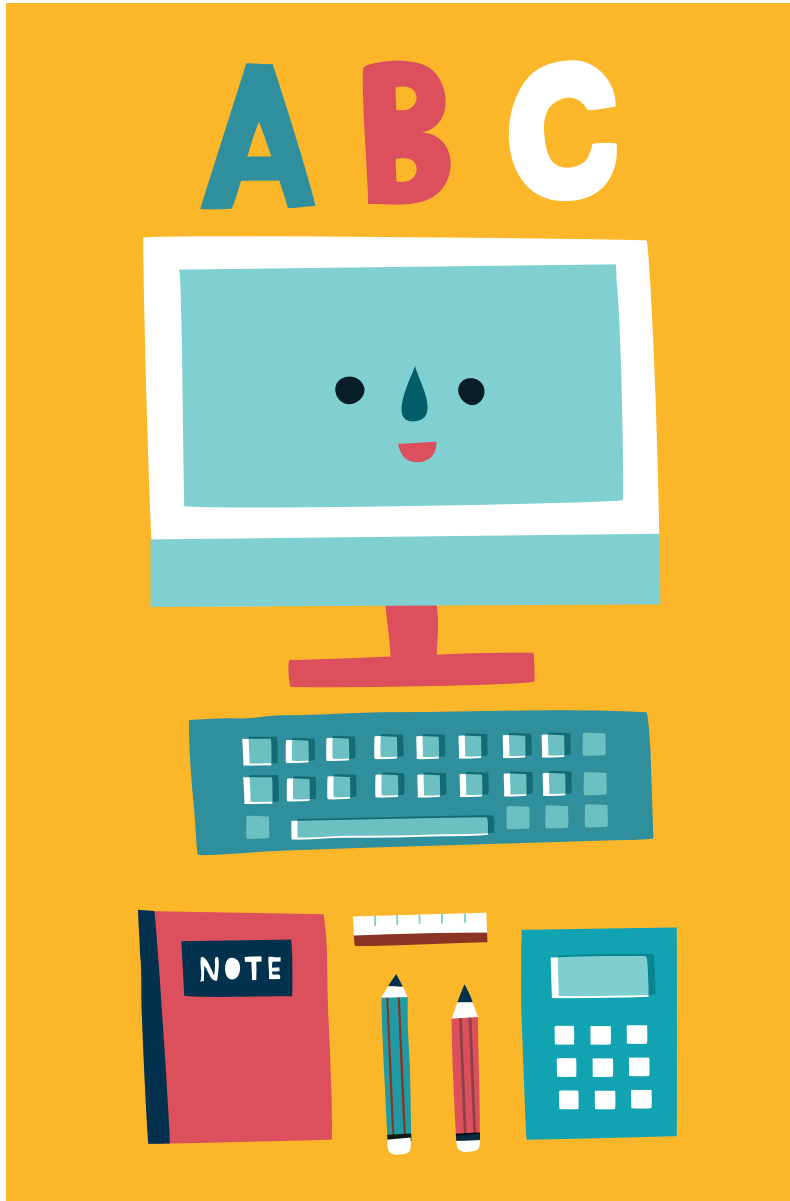
## Children, Youth & Families

Organization   Project Title	Grant Amount	Paid Amount
<b>Metropolitan Community College Foundation</b> Youth Development Associates Credential (YDAC) Support	\$192,400	\$75,000
<b>Metropolitan Lutheran Ministry</b> Support for Northland Community Services Center	\$170,000	\$145,000
<b>Mid-America Regional Council</b> "Double Up Kansas City" Program	\$300,000	\$0
<b>Miles of Smiles</b> Office Relocation and Purchase of New Equipment	\$27,430	\$27,430
<b>Newhouse</b> "New Beginnings" Campaign	\$400,000	\$0
<b>Reconciliation Services</b> Emergency Assistance Programs	\$25,000	\$25,000
<b>reStart, Inc.</b> Kitchen & Dining Room Renovations "Laying the Foundation" Ground Floor Renovation Project	\$50,000 \$550,000	\$50,000 \$550,000
<b>Rose Brooks Center, Inc.</b> "Safe Futures" Campaign	\$1,270,000	\$150,000
<b>SAFEHOME, Inc.</b> "Building a Better Tomorrow" Campaign	\$350,000	\$100,000
<b>Salvation Army - Kansas City</b> General Operating Support "Hope Works" Initiative Support	\$500,000 \$1,440,000	\$500,000 \$1,000,000
<b>SAVE, Inc.</b> Silverleaf Building Renovation Project	\$150,000	\$150,000
<b>Southwest Boulevard Family Health Care</b> 25th Anniversary Recognition	\$50,000	\$50,000
<b>Spofford</b> REACH to TEACH Program Expansion (2013-15)	\$270,000	\$90,000
<b>Sunflower House</b> Renovation Project	\$50,000	\$0
<b>The Bridge Home For Children, Inc.</b> Organizational Study	\$25,000	\$25,000
<b>The Plaza Academy</b> Additional Staff Support	\$50,000	\$50,000
<b>The Whole Person, Inc.</b> The Whole Family Project and Deaf Services	\$25,000	\$25,000
<b>True Light Family Resource Center</b> Kitchen Expansion Project	\$40,000	\$40,000

## Children, Youth & Families

Organization   Project Title	Grant Amount	Paid Amount
<b>Truman Medical Center Charitable Foundation</b> "Shoring Up Essential Services" Campaign	\$1,500,000	\$1,500,000
<b>University Academy</b> Dental Clinic Support	\$30,000	\$30,000
<b>Women's Employment Network</b> Employment Preparation Training Program Support	\$50,000	\$50,000
<b>YMCA of Greater Kansas City</b> "Building What Matters: The Community Capital Campaign" & Program Support for Youth Volunteer Corps of KC	\$1,620,000	\$40,000
<b>Youth Ambassadors</b> Program Support including YVC Collaboration	\$45,000	\$15,000
.....		
<b>CHILDREN, YOUTH &amp; FAMILIES TOTAL</b>	<b>\$17,617,096</b>	<b>\$8,071,696</b>

The Grant Amount columns may include grant pledges. The Amount Paid columns reflect only the amounts paid on grants in 2015. Additional payments may have been made in prior years.



# Point E. Education

In the category of early, elementary and secondary education, the Hall Family Foundation provided support to not-for-profit agencies that are committed to expanding the number of excellent educational opportunities and providing support to students, school teachers and education leaders in the Kansas City area.

Grantmaking in early, elementary and secondary education seeks to promote excellence and access to a quality education. We prefer to support organizations, programs and projects that address the educational needs of urban students with a particular interest in systemic reform/improvement efforts, closing achievement gaps and building human capital.

Special Focus	Priority Areas	Supplemental Interests	2015
<p>A primary goal is to increase access to high quality early learning programs. In K-12, the Foundation focuses on collaborating with stakeholders to expand the number of high quality schools. Supporting the growth of proven or promising individual schools is illustrative of the Foundation's approach.</p>	<p>Recognizing that all schools and early learning programs need highly effective teachers and leaders to increase student academic achievement, the Foundation provides support to organizations that strengthen the quality and flow of the human capital pipeline for classrooms and schools.</p>	<p>The Foundation has a long history of supporting programs that provide educationally-based enrichment opportunities for students outside of the classroom. Programs that support parental involvement in the development of their children and help parents navigate school options are also funded.</p>	<p><b>Smallest Grant</b> <b>\$15K</b> Show Me KC Schools, Planet Play</p>
<p><b>2015 Category Highlights</b></p>			<p><b>Largest Grants</b> <b>\$1M</b> City Year, Inc. and Teach for America - Kansas City</p>
<p><b>The Children's Campus of Kansas City (CCKC)</b> partners with Project EAGLE/ Educare Kansas City to provide early learning services to low-income families in Wyandotte County. Nationally, the Educare program is considered a model for best practices in early education. CCKC's successful fundraising effort allowed Educare Kansas City to add two new classrooms for infants and toddlers. New classrooms will be operated in partnership with The Family Conservancy, also a CCKC partner.</p>			<p><b>Percentage of Total Grants Paid</b> <b>9%</b></p>
<p><b>Citizens of the World Charter Schools</b> is a dynamic, national charter school network. Thanks to the research, proactive encouragement, and partnership of a group of midtown parents, Citizens will open the first of four public, charter schools in Kansas City in 2016. The schools will eventually serve grades K-12 and will focus on delivering a rigorous academic curriculum while developing understanding and connection in a racially and economically diverse school community.</p>			<p><b>Grants Paid in Category</b> <b>\$3,543,257</b></p>
<p><b>Teach for America (TFA)</b> seeks to "enlist, develop and mobilize" future leaders to join the classroom in rural and urban core areas where there is a shortage of teachers. The organization aims to help all students to achieve their fullest potential regardless of income, race or zip code. Since 2008, TFA-KC has placed over 540 new teachers and reached more than 62,000 students in public schools and early learning centers across Kansas City.</p>			



# Point H. Higher Education

The grantmaking category of Higher Education was the largest in terms of grants paid in 2015 due to the Hall Family Foundation's support for a new Health Education Building at the University of Kansas Medical Center. The goal of this category is to continue the impact of excellent programs and raise the profile of higher education in the Kansas City region.

The Foundation makes Higher Education grants for select programs that are considered centers of excellence.  
 We emphasize programs that expand research capacity and education opportunities.  
 We recognize the link between Higher Education and the economic vitality of the region.

Special Focus	Priority Areas	Supplemental Interests	2015
<p>Support for the University of Kansas is historically of high importance to the Foundation. Recent special focus grants have supported the Hall Center for the Humanities and professors and fellows teaching in the humanities, KU Medical Center and KU Business School.</p>	<p>The Foundation gives priority to centers of excellence in higher education. These centers exemplify quality and are generally unique, distinguished programs raising the profile of higher education in the region.</p>	<p>Recognizing the link between higher education and the vitality of the Kansas City region, targeted initiatives and programs at regional colleges and universities are of interest to the Foundation. From time to time support is also provided to niche programs at community colleges.</p>	<p><b>Smallest Grant</b>  <b>\$25K</b>                      Kansas University Endowment Association</p>
<p><b>2015 Category Highlights</b></p>			<p><b>Largest Grant</b>  <b>\$25M</b>                      Kansas University Endowment Association</p>
<p><b>The Hall Center for the Humanities at the University of Kansas</b> exists to stimulate and support interdisciplinary research in the humanities, arts and social sciences. It supports scholarly development through a variety of fellowships and grants, workshops, seminars, and colloquium for faculty, graduate students, and undergraduates at KU. In addition, it sponsors public programs that bring humanities scholarship to the wider community.</p>			<p><b>Percentage of Total Grants Paid</b>  <b>41%</b></p>
<p><b>The Oxbridge Scholars program at William Jewell</b> is a center of excellence at the college. This highly selective honors program delivers a tutorial-style, liberal arts education culminating in a year-long study abroad program in England. This longstanding program at William Jewell is respected and benchmarked nationally. All Oxbridge Scholars who apply are accepted to graduate programs, including to some of the most prestigious universities in the world.</p>			<p><b>Grants Paid in Category</b>  <b>\$16,960,600</b></p>
<p><b>The University of Kansas Medical Center (KUMC)</b> started construction of a new Health Education Building in 2015. Scheduled to open in mid-2017, the new facility will support updated curriculum for the KU Schools of Medicine, Nursing and Health Professions. This curriculum uses a competency-based approach, allowing students to spend more time with faculty in small group discussions and seminars. The Health Education Building will feature a new simulation center and flexible, state-of-the-art learning spaces to enable active clinical learning experiences.</p>			

## Education

Organization   Project Title	Grant Amount	Paid Amount
<b>Académie Lafayette</b> "Give to Grow" Campaign for Campus Expansion & Building	\$550,000	\$500,000
<b>Alliance for Childhood Education</b> General Program Support	\$50,000	\$50,000
<b>Children's Campus of Kansas City</b> Renovations for Expanded Services	\$250,000	\$250,000
<b>Citizens of the World Charter Schools</b> Development of Citizens of the World KC Charter School	\$650,000	\$225,000
<b>City Year, Inc.</b> Program Support	\$1,000,000	\$250,000
<b>Cristo Rey Kansas City High School</b> Literacy Project Support	\$50,000	\$50,000
<b>Crossroads Academy of Kansas City</b> Facilities Expansion Project, Phase II	\$200,000	\$75,000
<b>El Centro, Inc.</b> "Healthy Eating, Healthy Play, Healthy Kids!" Project Support	\$187,500	\$115,000
<b>Hispanic Development Fund - Greater KC</b> Organization Capacity Building Project	\$200,000	\$75,000
<b>Johnson County Library Foundation</b> 2015 Summer Reading and "6 by 6" Programs	\$26,660	\$26,660
<b>Kansas University Endowment Association</b> Reach Out & Read 1-Month Well Child Checkup Book Program	\$25,000	\$25,000
Doctoral and Mid-Career Fellowships in the Humanities	\$1,468,800	\$58,600
Hall Center Initiatives Support (2014-16)	\$210,000	\$70,000
Construction of New Health Education Building at KUMC	\$25,000,000	\$16,300,000
<b>Leading Educators</b> Greater Kansas City Leading Educators Fellowship Program	\$452,207	\$150,735
<b>Mid-America Regional Council</b> Early Learning System Change - Phase 1, 2015-16	\$500,000	\$250,000
<b>Missouri Charter Public School Association</b> General Operating Support	\$50,000	\$50,000
<b>Operation Breakthrough</b> Program Support for Four Strategic Initiatives	\$150,000	\$150,000
<b>Planet Play</b> Year of Play Program Support	\$15,000	\$15,000
<b>PREP-KC</b> Program Support	\$523,671	\$278,922

## Education

Organization   Project Title	Grant Amount	Paid Amount
<b>Science Pioneers, Inc.</b> Program Support	\$50,000	\$15,000
<b>Sherwood Center for the Exceptional Child</b> Playground Project	\$50,000	\$50,000
<b>Show Me KC Schools</b> Program Support	\$15,000	\$15,000
<b>Teach for America - Kansas City</b> Program Support	\$1,000,000	\$500,000
<b>Turn the Page KC</b> KC Summer Reading Corps	\$27,000	\$27,000
<b>United Inner City Services</b> "Engaging All Minds" Program Support	\$150,000	\$150,000
<b>University of Missouri Kansas City</b> Matching Grant to KC SourceLink	\$62,500	\$12,500
<b>University of Missouri KC Foundation</b> Kansas City Consortium with The Acting Company	\$50,000	\$25,000
<b>Wildwood Outdoor Education Center, Inc.</b> Program Support (2015-17)	\$47,000	\$25,000
<b>William Jewell College</b> Oxbridge Program Support and Developing Faculty Oxbridge Honors Program Expansion	\$463,000 \$1,241,500	\$115,000 \$379,500
<b>Wonderscope Children's Museum of KC</b> Capacity-building Grant	\$50,000	\$50,000
.....		
<b>EDUCATION TOTAL</b>	<b>\$34,839,778</b>	<b>\$20,503,857</b>

The Grant Amount columns may include grant pledges. The Amount Paid columns reflect only the amounts paid on grants in 2015. Additional payments may have been made in prior years.



# Point A. The Arts

The Hall Family Foundation made grants to support 18 arts agencies in 2015, intended to offer audiences, students and artists the chance to express and experience a wide variety of artistic forms and enhance the quality of life in the greater Kansas City area.

Grants in The Arts encourage excellence in the community's performing and visual arts organizations. Top priority is given to programs that enhance quality, strengthen management and increase audience development. While larger, established arts groups take priority, we also invest in smaller groups that fill specific niches.

Special Focus	Priority Areas	Supplemental Interests	2015
<p>The relationship with the Nelson-Atkins Museum of Art is historically strong thanks to numerous collaborations on significant projects such as the development, maintenance and growth of the Donald J. Hall Sculpture Park and the Photography Collection.</p>	<p>The Foundation gives priority to four local performing arts groups nicknamed the "majors," the Kansas City Symphony, the Kansas City Repertory Theatre, Inc., the Kansas City Ballet and the Lyric Opera of Kansas City.</p>	<p>Support for some smaller arts organizations known for exceptional quality, serving a niche or offering a unique project enhancing the overall arts landscape in Kansas City is also an important part of the Foundation's grantmaking in the arts.</p>	<p><b>Smallest Grant</b> <b>\$10K</b> Johnson County Community College</p>
<p><b>2015 Category Highlights</b></p>			<p><b>Largest Grant</b> <b>\$10M</b> The Nelson Gallery Foundation</p>
<p><b>The Kansas City Ballet</b> has grown to a company of 43 dancers, including 28 in the main company, six Kansas City Ballet II dancers and nine trainees. Balancing classic story ballets with fresh, newly choreographed works, the Ballet's five annual productions inspire the imaginations of young and old alike. In 2015, the Ballet premiered a dramatic revision of <i>The Nutcracker</i>, to a wide audience and critical acclaim for its creative interpretation of this beloved classic.</p> <p><b>Kansas City Repertory Theatre, Inc.</b> cut the ribbon on its dramatic new Dr. Patricia McIlrath Lobby and renovated Spencer Theatre, just in time for the community to see another beloved holiday classic, KC Rep's production of Dickens' <i>A Christmas Carol</i>. For 50 years, KC Rep has delivered excellence in theater, this year to an audience of over 100,000 including 12,000 local students experiencing "live" theater at matinée performances.</p> <p><b>Mid-America Arts Alliance (M-AAA)</b>, headquartered in Kansas City, serves a six-state region through national traveling exhibition programs, innovative leadership development programs and strategic grantmaking in the arts. This year, M-AAA is completing research in Kansas City in order to launch the ENGAGE program for smaller nonprofits in the arts, providing capacity building including targeted training in governance, strategic and financial planning. ENGAGE will strengthen management and program capabilities for smaller agencies on tighter budgets.</p>			<p><b>Percentage of Total Grants Paid</b> <b>16%</b></p>
			<p><b>Grants Paid in Category</b> <b>\$6,873,847</b></p>



## The Arts

Organization   Project Title	Grant Amount	Paid Amount
<b>ArtsKC Regional Arts Council</b> Arts Consortium	\$40,000	\$10,000
<b>Charlotte Street Foundation</b> Leadership Transition and Program Planning	\$135,000	\$60,000
<b>Friends of Chamber Music</b> 2014-15 Season Support	\$20,000	\$20,000
Youth Education and Ticket Programs	\$50,000	\$0
<b>Heartland Men's Chorus</b> 2014-15 Season and Program Support	\$25,000	\$25,000
<b>Johnson County Community College</b> 25th Anniversary Season	\$10,000	\$10,000
<b>Kansas City Ballet</b> Nutcracker Revisions and KCBll Funding	\$400,000	\$200,000
<b>Kansas City Chorale</b> Arts Stabilization Fund	\$15,000	\$15,000
<b>Kansas City Public Television</b> Arts Upload Programming	\$125,000	\$65,000
<b>Kansas City Repertory Theatre, Inc.</b> 50th Anniversary Campaign	\$3,600,000	\$200,000
<b>Kansas City Young Audiences</b> Arts Partners Program and Operating Support	\$40,000	\$40,000
<b>Kauffman Center for the Performing Arts</b> Endowment Campaign	\$2,000,000	\$1,000,000
<b>Lyric Opera of Kansas City</b> Support for Production Costs and Audience Development Initiatives	\$131,600	\$131,600
<b>Mid-America Arts Alliance</b> Needs Assessment for ENGAGE Project	\$25,000	\$25,000
Kansas City-based Programming	\$150,000	\$50,000
<b>Nelson Gallery Foundation</b> Interest Paid & Refinancing Charge on Outstanding Bond	\$0	\$859,609
Photography Collection (2013-14)	\$1,500,000	\$363,762
Photography Collection 2014	\$1,700,000	\$54,807
Photography Collection 2015	\$1,700,000	\$1,523,346
Special Acquisitions	\$10,000,000	\$1,643,723
Picasso Primitif Exhibit Support	\$500,000	\$500,000

## The Arts

Organization   Project Title	Grant Amount	Paid Amount
<b>Paul Mesner Puppets</b> Program Support	\$12,000	\$12,000
2014-15 Season Support	\$25,000	\$25,000
<b>Unicorn Theatre</b> 2014-15 Season and Program Support	\$40,000	\$40,000
.....		
<b>THE ARTS TOTAL</b>	<b>\$22,243,600</b>	<b>\$6,873,847</b>

The Grant Amount columns may include grant pledges. The Amount Paid columns reflect only the amounts paid on grants in 2015. Additional payments may have been made in prior years.



# Point N. Neighborhood Revitalization

In 2015, the Hall Family Foundation changed the name of this category from "Community Development" to "Neighborhood Revitalization" to better describe its goal and strategic direction. The Foundation supported 12 different agencies that work with residents and other stakeholders to improve neighborhoods across the Kansas City area.

Neighborhood Revitalization grantmaking seeks to prevent or overcome blight and deterioration of the urban core and its neighborhoods. The Foundation prefers to support organizations, programs and projects that promote lasting, comprehensive redevelopment in targeted areas or whose work leverages Foundation grant awards in other interest areas that may affect specific neighborhoods.

Special Focus	Priority Areas	Supplemental Interests	2015
<p>The Foundation supports comprehensive neighborhood redevelopment efforts that focus on transforming blighted or at-risk urban core neighborhoods primarily for the benefit of low- to moderate-income residents.</p>	<p>Strong, anchor organizations are important for planning and mobilizing neighborhood revitalization efforts. The Foundation provides capacity building and special project support to organizations leading promising efforts in urban core revitalization.</p>	<p>Place-based programming that helps to build community and increase neighborhood capacity to address or prevent blight is also supported by the Foundation's grantmaking.</p>	<p><b>Smallest Grant</b></p> <p><b>\$15K</b></p> <p>Community Capital Fund, NorthWest Communities Development Corp.</p>
<p><b>2015 Category Highlights</b></p>			<p><b>Largest Grant</b></p> <p><b>\$2.2M</b></p> <p>LISC</p>
<p><b>Greater Kansas City Local Initiative Support Corporation (LISC)</b> provides leadership, financial and technical expertise, and resources to create neighborhoods that are good places to live, work, raise children and conduct business. LISC supports over 100 square miles of neighborhoods in the Kansas City metropolitan area.</p> <p><b>CHWC, Inc.</b> provides quality, affordable housing in Wyandotte County, concentrating its efforts on urban core neighborhoods. In addition to affordable housing, CHWC focuses on homeownership and financial coaching, and community building and engagement, believing that such programs work together to build healthy, resilient neighborhoods.</p> <p><b>Legal Aid of Western Missouri</b> provides assistance to prevent urban core homes from becoming blighted simply because the owner-occupant died without a will. When a homeowner dies without means of transferring property, the result can be a lifetime of savings, represented by home equity, lost to the next generation. Legal Aid's Urban Core Estate Planning Project provides beneficiary deeds that keep homes from becoming abandoned and transfer savings from one generation to the next.</p>			<p><b>Percentage of Total Grants Paid</b></p> <p><b>3%</b></p>
			<p><b>Grants Paid in Category</b></p> <p><b>\$1,441,666</b></p>



# Point I. Additional Interests

For the Hall Family Foundation, the Additional Interests category is not just a “catch all” for miscellaneous grants. Rather, the category allows the Foundation to respond to community-wide initiatives and support cultural and educational attractions that enhance the quality of life in the greater Kansas City area and, on a limited basis, beyond.

The Additional Interests category includes Foundation support of community-wide efforts that seek to provide long-term solutions to local issues of high priority, such as Life Sciences.

Special Focus	Priority Areas	Supplemental Interests	2015
<p>The Foundation has a significant commitment to advancing Life Sciences in the region, including supporting the University of Kansas Cancer Center’s National Cancer Institute designation and application to become a Comprehensive Cancer Center.</p>	<p>Cultural and historical attractions and programming add to the overall vitality of the Kansas City region. The Foundation supports attractions and educational programs for all ages, helping make Kansas City a culturally rich, interesting and fun place to live.</p>	<p>Legacy organizations, the agencies that were historically of a high interest for founders Joyce and Elizabeth Hall, round out the Additional Interests category. Stewarding the donor intent of the founders, the Foundation provides support for a small group of longstanding agencies in the broader region.</p>	<p><b>Smallest Grant</b> <b>\$25K</b> The Village Square</p> <hr/> <p><b>Largest Grant</b> <b>\$50M</b> Kansas City Area Life Sciences Institute</p>
<p><b>2015 Category Highlights</b></p>			<p><b>Percentage of Total Grants Paid</b> <b>12%</b></p>
<p><b>The Kansas University Cancer Center</b>, working with Children’s Mercy Hospital and Truman Medical Centers, is applying for Comprehensive Cancer Center Designation. Thanks to committed leaders, major accomplishments by medical staff and a strong public/private partnership, the KU Cancer Center is a true center of excellence in the region. Its focus areas include cancer biology, specialized cancer care and control, prevention, and experimental therapeutics and drug discovery. It has conducted 120 National Cancer Institute-funded studies over the last three years. The KU Cancer Center and its partners feel a tremendous sense of urgency and accountability to save lives, using personalized medicine, with a deep understanding that cancer affects each person in a different way.</p>			<p><b>Grants Paid in Category</b> <b>\$4,848,000</b></p>
<p><b>The National World War I Museum at Liberty Memorial</b>, the country’s only museum dedicated to honoring those who served in the Great War, is commemorating the centennial of the Great War in 2014-2019. During the course of the centennial commemoration, a variety of programs, exhibitions and events will educate, recognize and remember the people who served and explore the conflict’s enduring impact. The Museum plans to expand its available gallery space to provide additional opportunities to showcase traveling exhibitions from institutions across the world, which will complement its existing collection of more than 100,000 artifacts—the most comprehensive collection in the world.</p>			

## Neighborhood Revitalization

Organization   Project Title	Grant Amount	Paid Amount
Argentine Neighborhood Development Association Program Support	\$50,000	\$50,000
Blue Hills Community Services Corporation Program Support	\$50,000	\$50,000
Builders Development Corporation Consolidated Plan Support	\$20,000	\$20,000
Christmas in October Warehouse Renovations	\$50,000	\$50,000
CHWC, Inc. Strategic Plan Implementation Support	\$250,000	\$125,000
Community Capital Fund Neighborhoods Rising Fund	\$15,000	\$15,000
Greater Kansas City Local Initiatives Support Corporation Catalytic Urban Redevelopment Capacity Initiative Three-year Strategic Plan Support	\$20,000 \$2,225,000	\$20,000 \$741,666
Ivanhoe Neighborhood Council Program Support	\$200,000	\$100,000
Kansas City Design Center Program Support	\$40,000	\$40,000
Legal Aid of Western Missouri Continuing Support for Urban Core Estate Planning Project	\$40,000	\$40,000
Morningstar's Development Company, Inc. Youth & Family Life Center Planning Grant Youth & Family Life Center Construction	\$50,000 \$250,000	\$50,000 \$125,000
NorthWest Communities Development Corp Program Support for Tabitha's Closet	\$15,000	\$15,000
<hr/>		
<b>NEIGHBORHOOD REVITALIZATION TOTAL</b>	<b>\$3,260,000</b>	<b>\$1,441,666</b>

The Grant Amount columns may include grant pledges. The Amount Paid columns reflect only the amounts paid on grants in 2015. Additional payments may have been made in prior years.

## Additional Interests

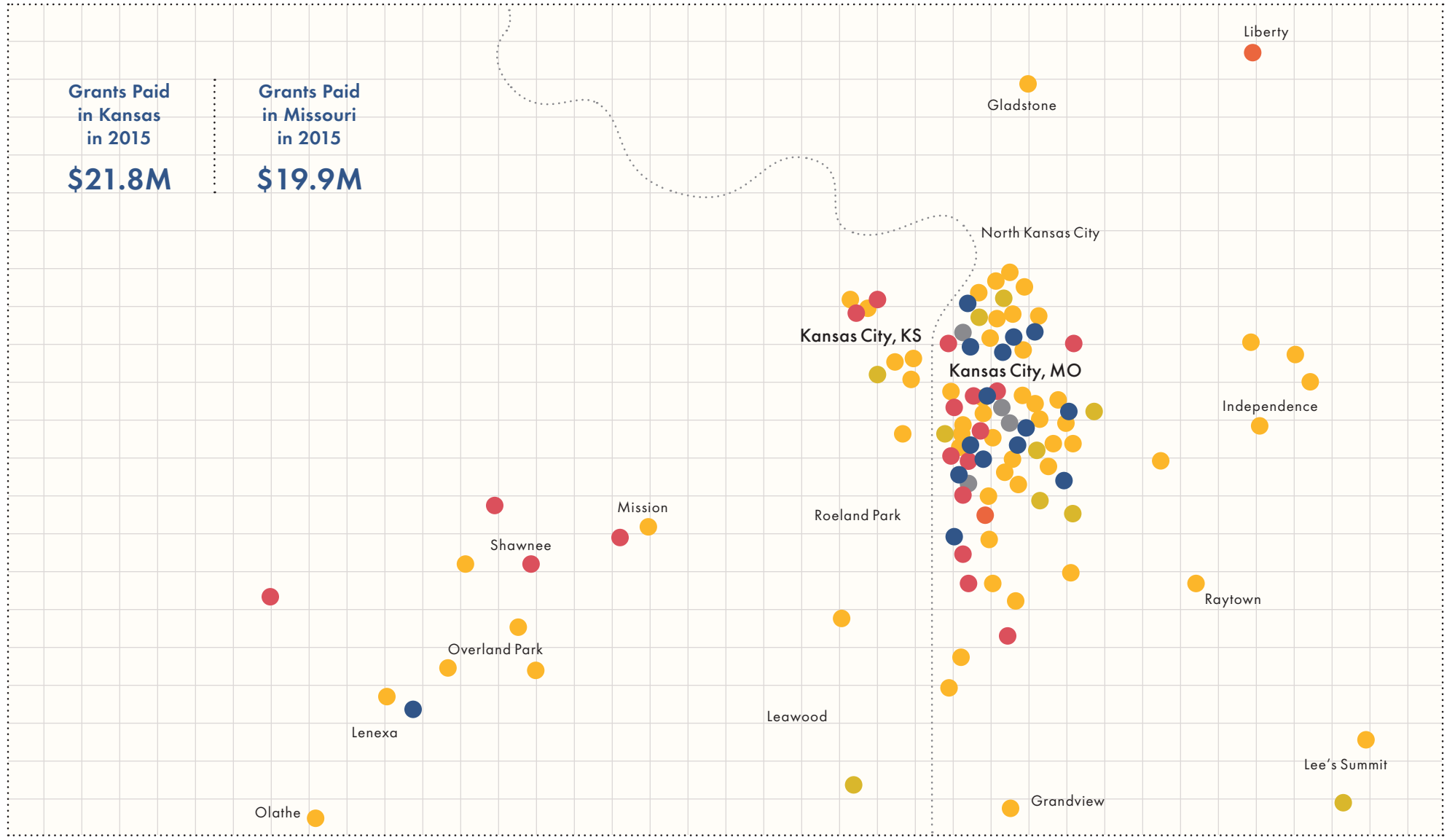
Organization   Project Title	Grant Amount	Paid Amount
Greater KC Community Foundation Operating Support for KCALSI Fund	\$150,000	\$150,000
Kansas City Area Life Sciences Institute Life Sciences Strategy Program Support (2008-17)	\$50,000,000	\$3,558,000
National World War I Museum "Call to Duty" Capital Campaign	\$1,400,000	\$700,000
The Eisenhower Foundation Campaign Consultant Services	\$415,000	\$415,000
The Village Square Program Support for "Dinners at the Square"	\$25,000	\$25,000
<hr/>		
<b>ADDITIONAL INTERESTS TOTAL</b>	<b>\$51,990,000</b>	<b>\$4,848,000</b>
<hr/>		
<b>GRAND TOTAL</b>	<b>\$129,950,474</b>	<b>\$41,739,066</b>

The Grant Amount columns may include grant pledges. The Amount Paid columns reflect only the amounts paid on grants in 2015. Additional payments may have been made in prior years.

2015 GRANT RECIPIENTS

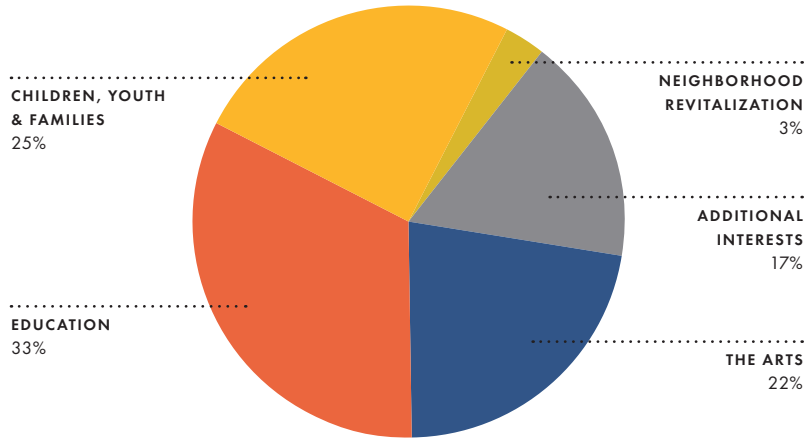
HALL FAMILY FOUNDATION

- Children, Youth & Families
- P-12 Education
- Higher Education
- The Arts
- Neighborhood Revitalization
- Additional Interests



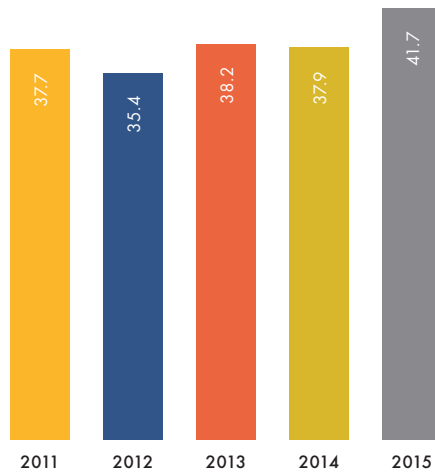
**5-YEAR SUMMARY OF GRANTS PAID BY CATEGORY**

Percentages for 2011-2015



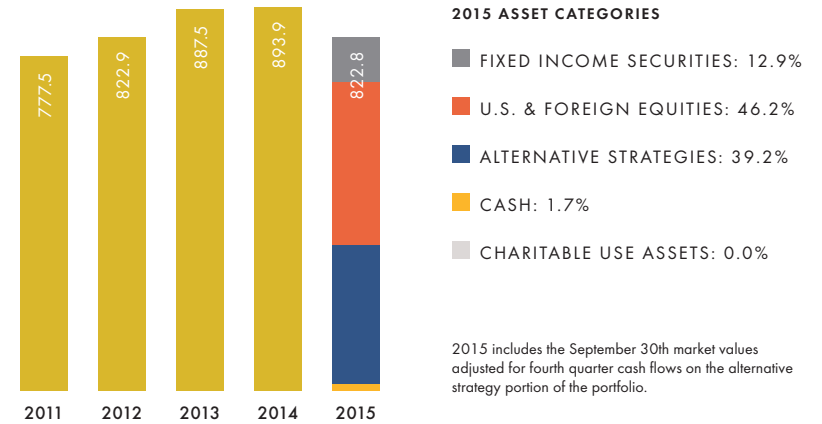
**CONTRIBUTIONS PAID**

In Millions of Dollars for the Years 2011-2015



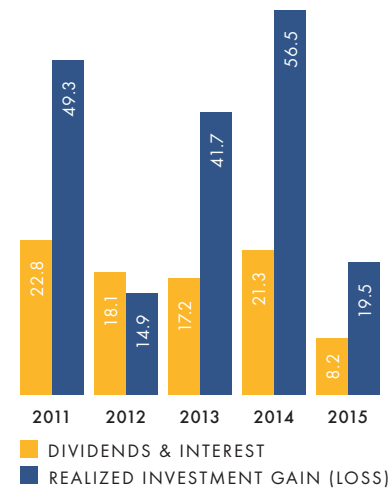
**ASSETS**

In Millions of Dollars for the Years 2011-2015



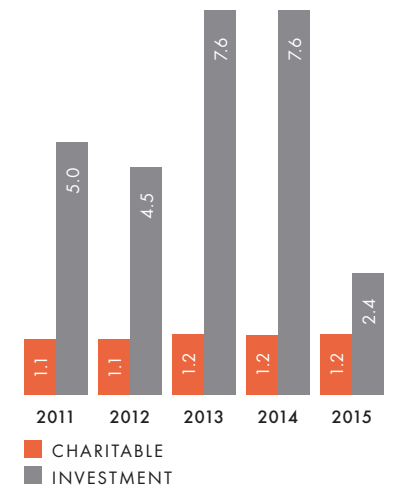
**INCOME**

In Millions of Dollars for the Years 2011-2015\*



**EXPENSES**

In Millions of Dollars for the Years 2011-2015\*



\* 2015, as presented, does not include K-1 income and expense from partnership holdings. The expenses graph includes cash operating expenses and excludes excise taxes. Charitable-related expenses are those incurred in carrying out the Foundation's exempt function. Investment expenses are those incurred in the management of the Foundation's investment portfolio.



## Foundation Directors

### **Donald J. Hall**

Chairman of the Board, Hallmark Cards, Inc.  
Chairman of the Board, Hall Family Foundation

### **William S. Berkley**

President and Chief Executive Officer,  
Tension Corporation

### **Peggy J. Dunn**

Mayor of Leawood, Kansas

### **Richard C. Green, Jr.**

Chairman, Corridor Energy LLC

### **Donald J. Hall, Jr.**

President and Chief Executive Officer,  
Hallmark Cards, Inc.

### **Irvine O. Hockaday, Jr.**

Retired President and Chief Executive Officer,  
Hallmark Cards, Inc.

### **Robert A. Kipp**

Retired Vice President, Hallmark Cards, Inc.

### **Sandra A.J. Lawrence**

Executive Vice President and  
Chief Financial Officer,  
Children's Mercy Hospital

### **Margaret H. Pence**

Community Volunteer

### **Morton I. Sosland**

Chairman, Sosland Companies, Inc.

### **David A. Warm**

Executive Director, Mid-America  
Regional Council

## Staff

### **President**

**William A. Hall**

### **Executive Assistant**

**Wanda Taylor**

### **Administrative Assistant**

**June Davis**

### **Program Officers**

#### **Sally Groves**

Children, Youth & Families

#### **Tracy McFerrin**

Early and K-12 Education,  
Neighborhood Revitalization and  
Children, Youth & Families

#### **Angela Smart**

The Arts,  
Higher Education and  
Children, Youth & Families

### **Rebecca Hall**

Foundation Intern

### **Address**

Hall Family Foundation  
P.O. Box 419580 - MD #323  
Kansas City, MO 64141-6580

### **Phone**

816.274.8516

### **Fax**

816.274.8547

### **Website**

[hallfamilyfoundation.org](http://hallfamilyfoundation.org)

HALL FAMILY  
FOUNDATION

---